



SSP3000B



SSP2000B

▶ SmartSiren® Platinum | Siren and Light Controllers

FEATURES

- Programmable siren/light controller with remote-mount amplifier
- Easy installation and programming
- Incorporates FS Convergence Network technology to provide a high level of customizable control capability
- “Plug-and-play” installation and programming software for easy configuration via laptop computer
- Compatible with Ford Interceptor Switch Module
- SSP3000B — Five-year warranty
- SSP2000B and SSP2000B-200 — Three-year warranty

APPROVALS

- Meets or exceeds SAE, California Title XIII, and NFPA requirements

With the Federal Signal SmartSiren® Platinum, a programmable siren and light controller with a remote-mount control head, unmatched functionality is put right at your fingertips. An intuitively engineered remote control head puts at-a-glance command and control in your officer’s hands. A simple PC interface makes it easy to program one vehicle – or an entire fleet – from your laptop. Also, Federal Signal’s unique FS Convergence Network simplifies the lightbar installation with a plug-and-play connection to the controller and amplifier. The SmartSiren Platinum is available in three models, SSP3000B, SSP2000B, and SSP2000B-200.

Controller Features

The SmartSiren Platinum provides the user with customized control of the siren, warning lights, directional lights, and other accessories. The familiar and functional control head has 17 backlit push-buttons and a 4-position slide switch. The push-buttons turn brighter when activated and can be programmed for press on, press off, and momentary. The brightness can be dimmed or turned-off for stealth operation. It comes with 140 labeling stickers, such as left alley, gun lock, and wail to further allow the user to customize their control head.

The SmartSiren Platinum can control the SignalMaster™ directional functions in Federal Signal lightbars, ILS systems, and “stick” lights that are compatible with FS Convergence Network. SmartSiren Platinum 3000B can be used with “traditionally wired” SignalMaster units, and both models can operate the latitude 3-wire SignalMaster. For convenient visual reference, the Platinum control system emulates the selected pattern of the SignalMaster operation, allowing the user to see what directional pattern is selected while looking at the control head.

Other control head features include easily accessible volume control, a bail bracket mount, a channel on the back of the controller for a wire harness, and an Ethernet port on the control head for programming, which allows programming to be done outside the vehicle and without needing to access the amplifier.



SSP3000B and SSP2000B controller front view



SSP3000B and SSP2000B controller back view



SSP2000B & SSP2000B-200



SSP3000B

Amplifier Features

The SmartSiren Platinum offers the standard siren tones (Wail, Yelp, Hi-Lo, and Priority), Unitrol tones (Wail, Yelp, Futura, Hi/Low, Ultra Hi/Low, Air Horn, Hetro) and additional features, such as PA, radio rebroadcast, and air horn. It has three serial ports; one port is for the control head and the other two are for Convergence Network devices, such as the Valor® or Integrity® lightbar. Other amplifier features include locking power connectors, horn ring transfer, and park kill. The amplifier has an aluminum, black-painted housing with a die-cast base.

For true convenience, SmartSiren Platinum offers four easily programmable inputs for other functions, such as emergency lights, and has fourteen relay outputs, giving the user more control and flexibility.

Programming Software Features

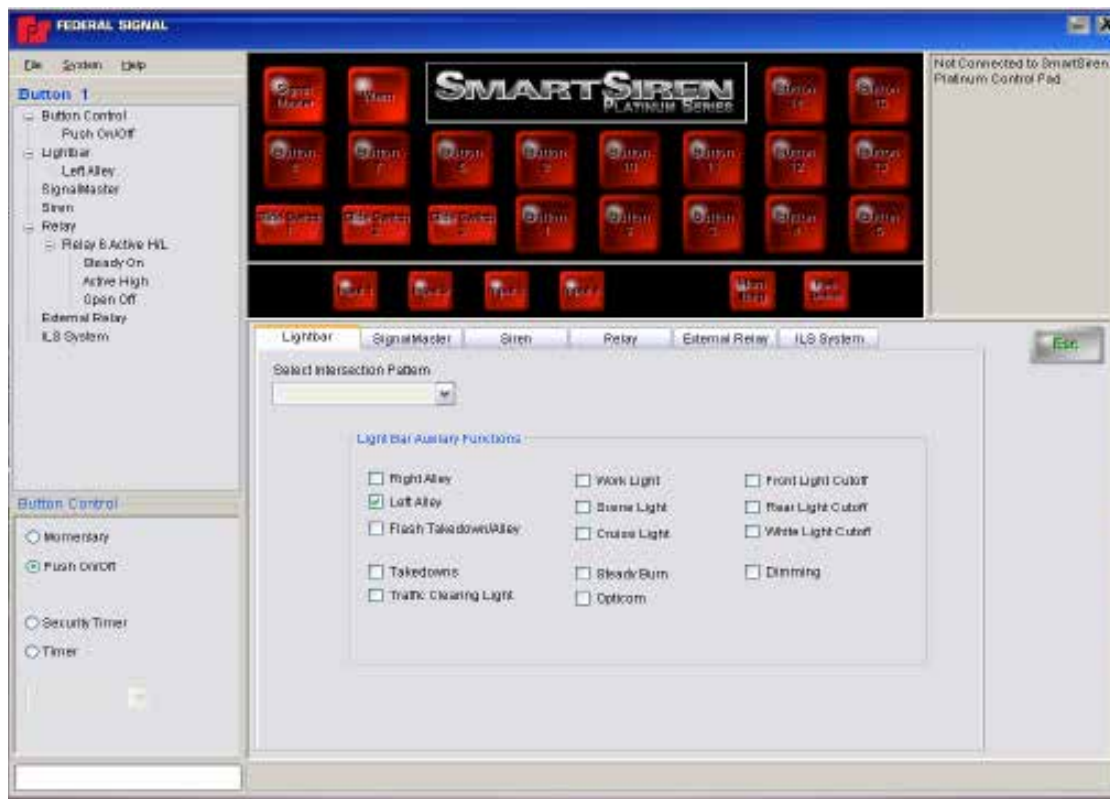
Software is available as a download from the FS website and siren configurations can be created via laptop computer. Configured programs can be extracted, modified, and stored for ease of service and re-use. The Federal Signal Convergence Network allows the user to plug-and-play simply by connecting the control head and amplifier to the vehicle's lightbar.

SmartSiren Platinum gives the user the ability to clone an entire fleet of control head functions. The user simply connects the SmartSiren to a PC and downloads the functions of the programmed software from one head to another.

Horn Ring Transfer

In addition to Federal Signal's TAPII Horn Ring Transfer capability, three new horn ring transfer capabilities have been added. Following is a description of the four options available:

- **Tap II Horn Ring** If a siren tone is already activated, each press of the horn will cycle the tone to the next programmed tone
- **Unitrol Sweep** Pressing the horn will make the siren "sweep" through all programmed tones, each tone will be generated for the selected number of seconds (programmable for 1 to 7 seconds in 1-second increments)
- **Unitrol Intersection** When horn is pressed, the siren will switch to the next tone for 2 to 14 seconds (programmable in 2-second increments), then revert back to the original tone
- **Hands Free** First horn press will activate the first programmed siren tone. Then each subsequent horn press will switch the siren to the next programmed tone. A double tap horn press will de-activate the siren tones.



SmartSiren Platinum programming software gives the ability to clone an entire fleet of remote control head functions.

Timer Feature

The Platinum built-in timer feature senses ignition ON/OFF and allows the selection of multiple time settings. Four different time delays are available ranging from immediately off to four hours.

Various devices can be wired to relay outputs on the Platinum amplifier (such as in-car video DVRs, radios, and laptop chargers), and a security shotgun timer is provided to minimize the possibility of unauthorized shotgun release. Because each device can be turned off at a different time, unlike many one setting external timers used by departments today, the Platinum timer feature allows the end user to avoid the extra cost of an external timer per vehicle.

Microphone Features

A noise-cancelling microphone plugs into the control head, eliminating the need to run a mic cable back into the amplifier.



Steering Wheel Switches

The Interceptor Switch module allows the user to operate the lights and siren from the steering wheel switches available as an option on the Ford Interceptor Sedan and Utility. It enables steering wheel switches #1, #2, and #3 to be inter-dependent and provide progressive switching similar to a traditional siren slide switch, while at the same time enabling the Instrument Panel indicators to reflect the state of the switches. The easy to install, compact, and user friendly device allows for plug-and-play, does not require the cutting of factory wires, and has a one year warranty. The kit includes the switch module, harness, and installation kit.

Comparison Table: The following table compares key features of models SSP2000B and SSP3000B

	SSP2000B	SSP3000B
Siren Tones	Both models feature the same traditional "SmartSiren" tones and "Unitrol" tones	
SignalMaster Control	Can control the SignalMaster directional functions in Federal Signal lightbars, ILS systems, and stick lights that are compatible with the FS Convergence Network	Same as SSP2000B, plus has the capability to control "traditionally-wired" SignalMaster units
Programmable Solid-state Auxiliary Relays	ELEVEN solid-state relays - One 10-amp High/Low - Six 10-amp High - Four 2-amp High	FOURTEEN solid-state relays - Ten 10-amp High/Low - Four 2-amp High
Programmable Input Circuits	Both models have SIX inputs on the amplifier (park kill, horn ring transfer, and 4 additional) Both models also use the same control head which has FOUR additional inputs, commonly used for steering wheel switches	
LED Diagnostic indicators and visual displays	No	Yes
Speakers	SSP2000B - use with 1 speaker SSP2000B-200 - use with 1 or 2 speakers	SSP3000B - use with 1 or 2 speakers
Fuses	Non-illuminating	Illuminating
Compatible with Interceptor Switch Module	Yes	Yes
Timer feature	Yes	Yes
Alarm feature	Yes	Yes
Warranty	3 years	5 years

Select Model

- SSP3000B 100/200W, programmable, diagnostic and full featured light and siren controller. Can control FS Convergence Network-enabled SignalMaster function as well as discrete-wired SignalMaster. Noise-cancelling microphone included.
- SSP2000B 100W, programmable siren/light controller. With noise-cancelling microphone.
- SSP2000B-200 100/200W version of SSP2000B.

Ford Interceptor Switch Modules

- SWM1 Interceptor Switch Module – positions #1, #2, and #3 are inter-dependent to enable “progressive” switching similar to a slide switch function, while position #4 is an independent “push-on/push-off” switch.
- SWM2 Interceptor Switch Module – positions #1, #2, and #3 are inter-dependent to enable “progressive” switching similar to a slide switch function, while position #4 is an independent “momentary switch”.

SPECIFICATIONS

Input Voltage	11-16 VDC (negative ground only)
Standby Current	Under 5 milli Amps
Operating temp	-40°C to +65°C
Storage Temperature	-40°C to +80°C

Physical Specifications			
	Height	Width	Depth
Steering Wheel Switch Modules	3.0 in (7.62 cm)	2.0 in (5.1 cm)	1.0 in (2.5 cm)
Amplifier	4.4 in (11.2 cm)	7.6 in (19.3 cm)	7.9 in (20.2 cm)
Control Head	3.2 in (8.3 cm)	6.8 in (17.3 cm)	1.6 in (4.1 cm)



SSP3000B amplifier rear view